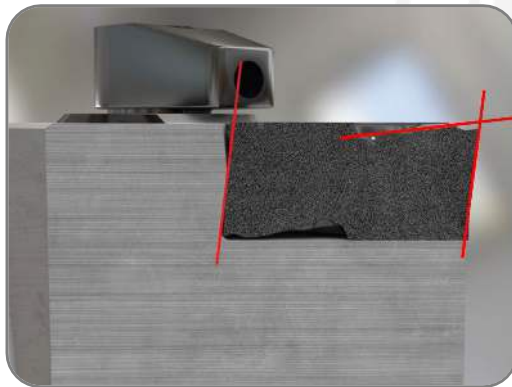


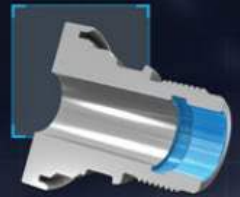


- ✓ 4 effektive Schneiden
- ✓ Weicher Schnitt

- ✓ Ziegerichtete Kühlung
- ✓ Hohe Stabilität durch Schwalbenschwanzklemmung
- ✓ Schraubenklemmung



Zur Produktübersicht



Positive Rake Inserts for Miniature and Small Parts



Designed for External and Internal Turning with Shanks. Fits Swiss Machines.

YOU Turning Intelligently?

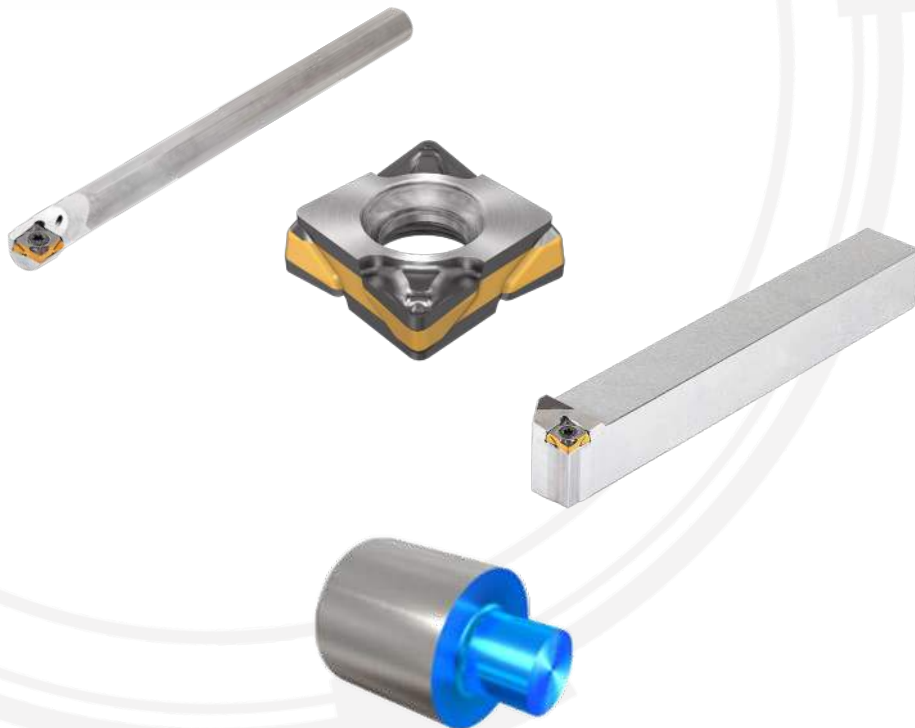
80° Double-Sided Positive Insert. Clamped in a Dove-Tail Shaped Pocket for Better Insert Stability and Longer Tool Life.



Ihr Nutzen beim Längs- und Plandrehen

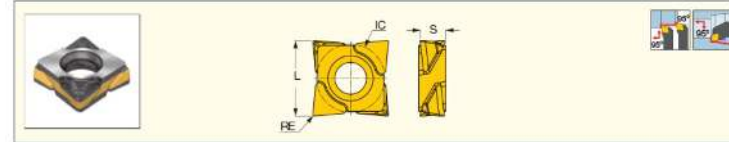
- ✓ 4 effektive Schneiden gegenüber 2 effektiven Schneiden bei CCMT-Platten
- ✓ Hohe Oberflächengüten
- ✓ Hohe Spankontrolle
- ✓ Weicher Schnitt, Einsatz auch bei leistungsschwächeren Maschinen möglich

LOGIQ4TURN
POSITIVE DOUBLE SIDED



LOGIQ4TURN

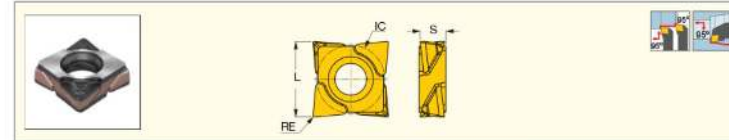
CXMU-F3P
80° Double-Sided and Double-Positive Inserts with a Positive Rake for Finishing Alloyed Steel



Designation	Dimensions				Tough → Hard				Recommended Machining Data	
	L	IC	S	RE	IC6050	IC1008	IC8150	IC907	ap (mm)	f (mm/rev)
CXMU 060208-F3P	6.88	6.34	2.38	0.80	•	•	•	•	0.80-2.00	0.07-0.25
CXMU 060204-F3P	6.96	6.34	2.38	0.40	•	•	•	•	0.50-2.00	0.05-0.25
CXMU 060202-F3P	7.00	6.34	2.38	0.20	•	•	•	•	0.30-2.00	0.05-0.25

LOGIQ4TURN

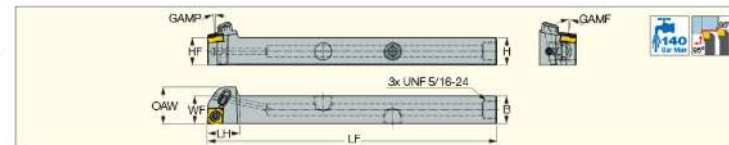
CXMU-F3M
80° Double-Sided and Double-Positive Inserts with a Positive Rake for Finishing Stainless Steel and H.T.A.



Designation	Dimensions				Tough → Hard				Recommended Machining Data		
	L	IC	S	RE	IC6025	IC1008	IC6015	IC806	IC907	ap (mm)	f (mm/rev)
CXMU 060208-F3M	6.88	6.34	2.38	0.80	•	•	•	•	•	0.80-2.00	0.07-0.25
CXMU 060204-F3M	6.96	6.34	2.38	0.40	•	•	•	•	•	0.50-2.00	0.05-0.25
CXMU 060202-F3M	7.00	6.34	2.38	0.20	•	•	•	•	•	0.30-2.00	0.05-0.25

LOGIQ4TURN

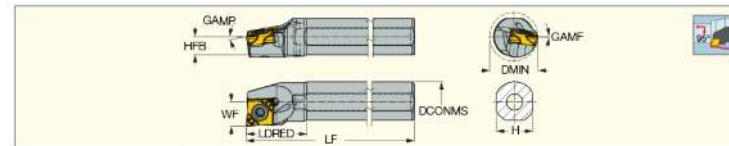
SCLXR/L 06XS-JHP-MC
Screw Lock Tools with JETCUT Coolant System Carrying CXMG 80° Rhombic Inserts for Swiss-Type Automatic Lathes



Designation	B	H	HF	LF	LH	WF	OAW	GAMP	GAMF	MIID ⁽¹⁾
SCLXR/L 1010K-06XS-JHP-MC	10.0	10.0	10.0	125.00	14.0	10.15	18.00	6.0	6.0	CXMU 060208
SCLXR/L 1212K-06XS-JHP-MC	12.0	12.0	12.0	125.00	14.0	12.15	18.00	6.0	6.0	CXMU 060208
SCLXR/L 1616K-06XS-JHP-MC	16.0	16.0	16.0	125.00	14.0	16.15	18.15	6.0	6.0	CXMU 060208

ISOTURN

A/E-SCLXR/L-06X
Screw Lock Boring Bars on which CXMU 80° Negative Rhombic Inserts are Mounted



Designation	DCONMS	LF	LDRED	H	HFB	WF	DMIN	GAMP	GAMF	MIID ⁽¹⁾
A08H SCLXR/L-06X	8.00	100.00	12.0	7.2	3.8	5.00	10.00	8.0	10.0	CXMU 060208
E08K SCLXR/L-06X	8.00	125.00	19.0	7.2	3.8	5.00	10.00	8.0	10.0	CXMU 060208
A10K SCLXR/L-06X	10.00	125.00	15.0	9.0	4.5	6.00	12.00	8.0	8.0	CXMU 060208
E10M SCLXR/L-06X	10.00	150.00	21.5	9.0	4.5	6.00	12.00	8.0	8.0	CXMU 060208
A12M SCLXR/L-06X	12.00	150.00	18.0	11.0	5.5	9.00	16.00	8.0	8.0	CXMU 060208
E12Q SCLXR/L-06X	12.00	180.00	25.0	11.0	5.5	9.00	16.00	8.0	8.0	CXMU 060208